

# National Transfer Accounts for Austria

Alexia Prskawetz

Institute of Mathematical Methods in Economics, Vienna University of Technology  
Vienna Institute of Demography, Austrian Academy of Sciences  
Wittgenstein Centre for Demography and Global Human Capital

# The Flow Account Identity

- Inflows

- Labor Income
- Asset Income
- Transfer Received

- Outflows

- Consumption
- Saving
- Transfers Paid

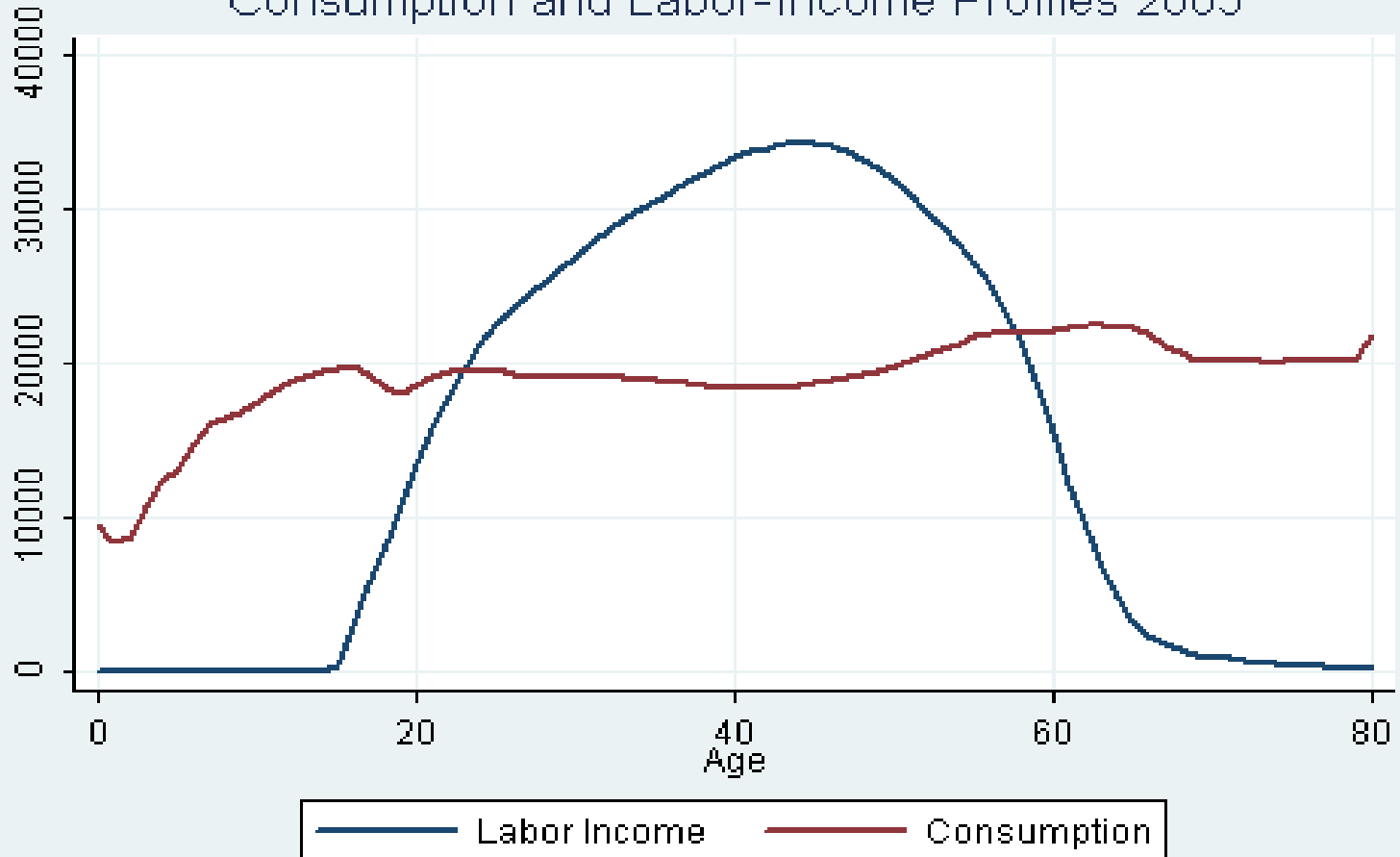
$$\underbrace{Y^l(a) + Y^a(a) + \tau^+(a)}_{\text{Inflows}} = \underbrace{C(a) + S(a) + \tau^-(a)}_{\text{Outflows}}$$

$$\underbrace{C(a) - Y^l(a)}_{\text{Lifecycle Deficit}} = \underbrace{Y^a(a) - S(a)}_{\text{Asset-based Reallocations}} + \underbrace{\tau^+(a) - \tau^-(a)}_{\text{Net Transfers}}$$

Age Reallocations

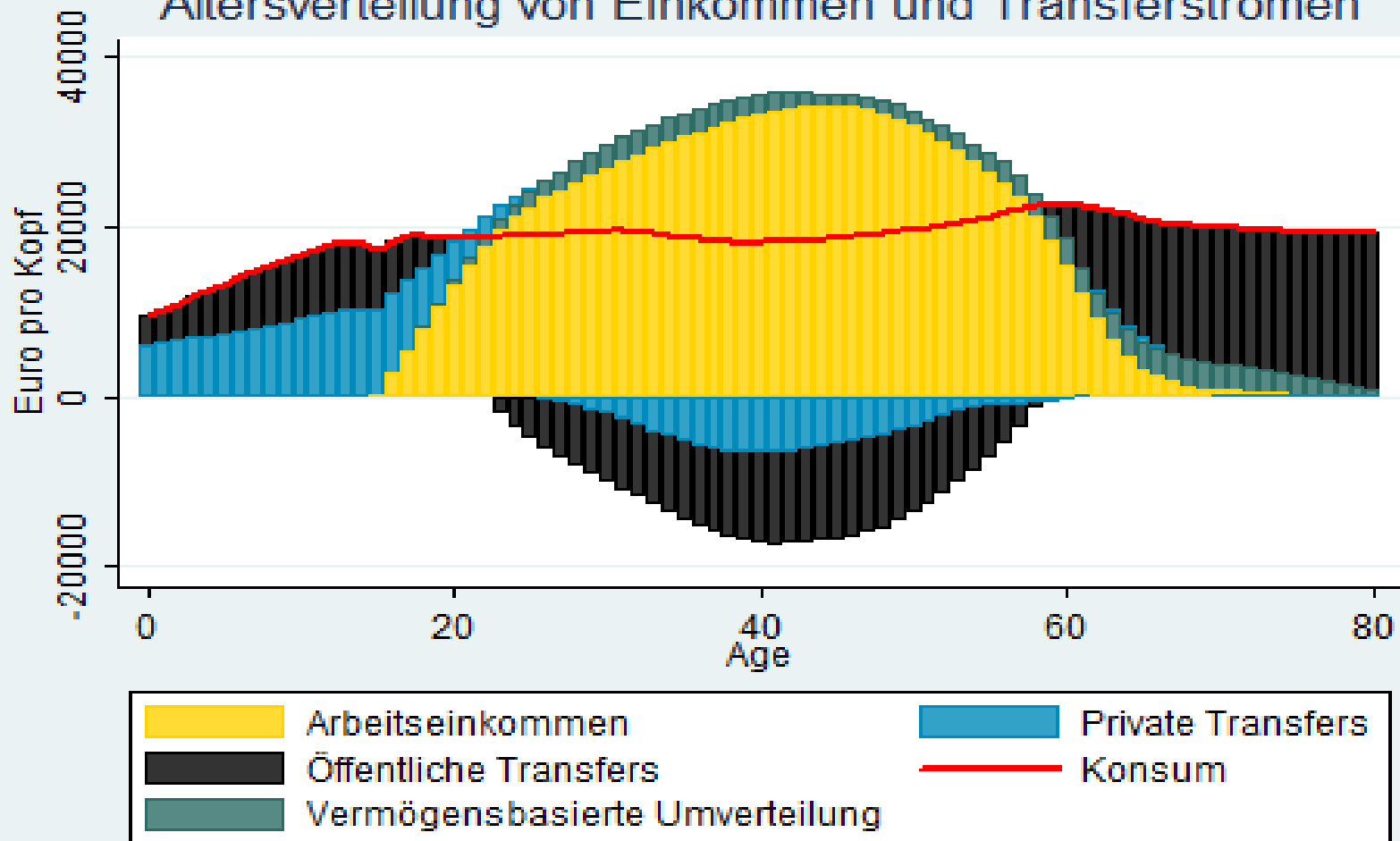
Source: Andrew Mason (2007)

## Consumption and Labor-Income Profiles 2005



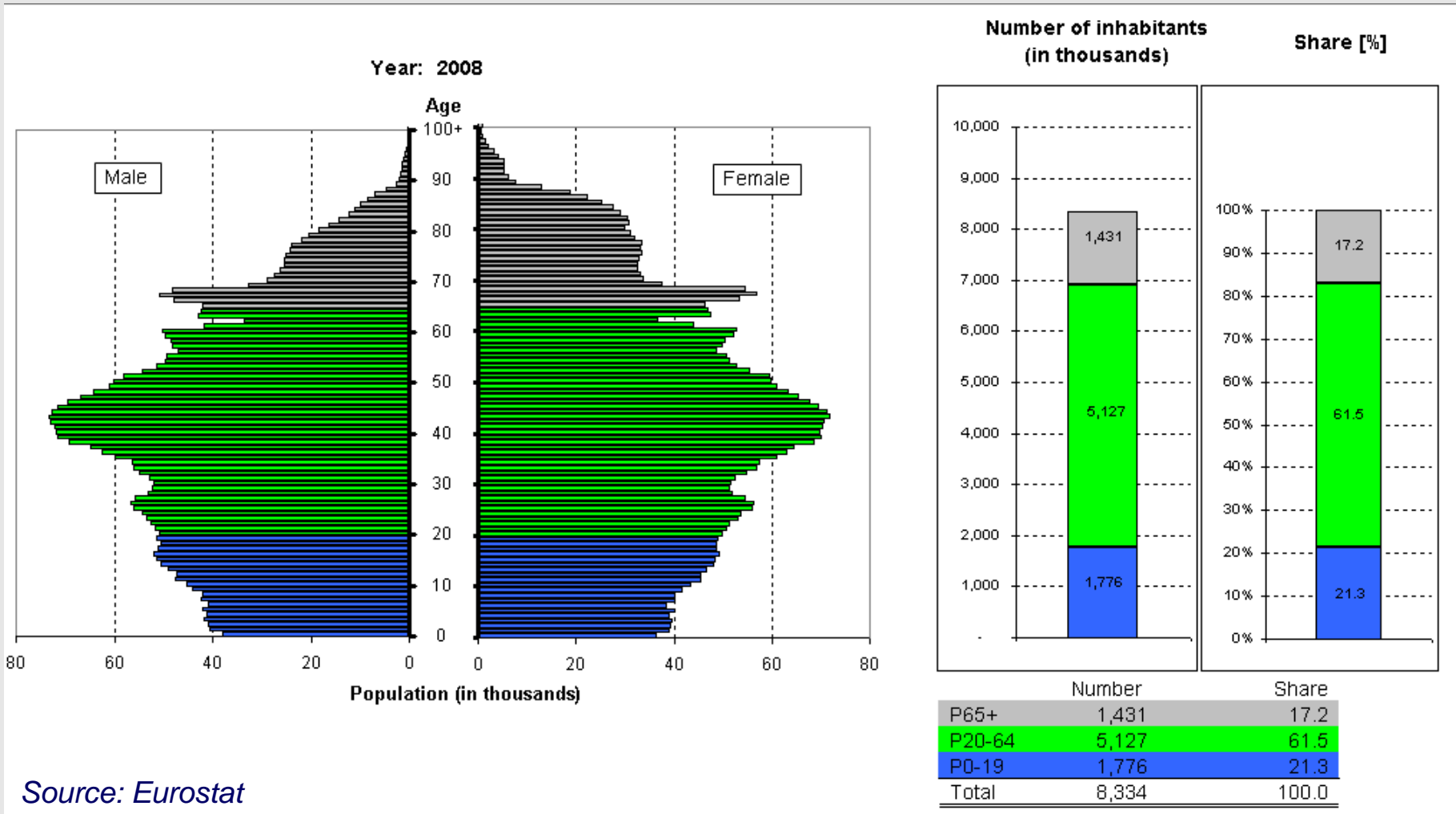
Source: Hammer and Prskawetz (2011)

# Altersverteilung von Einkommen und Transferströmen



Source: Hammer and Prskawetz (2011)

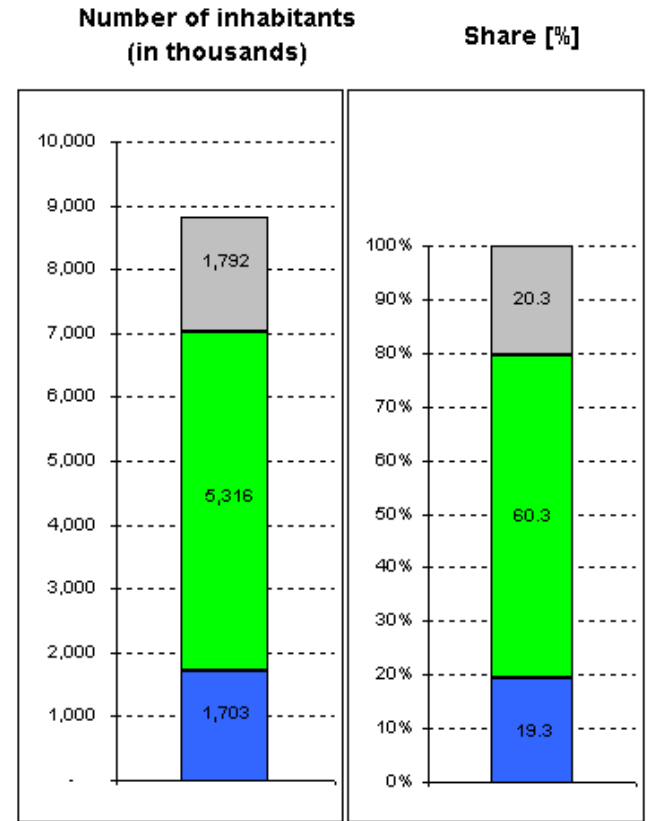
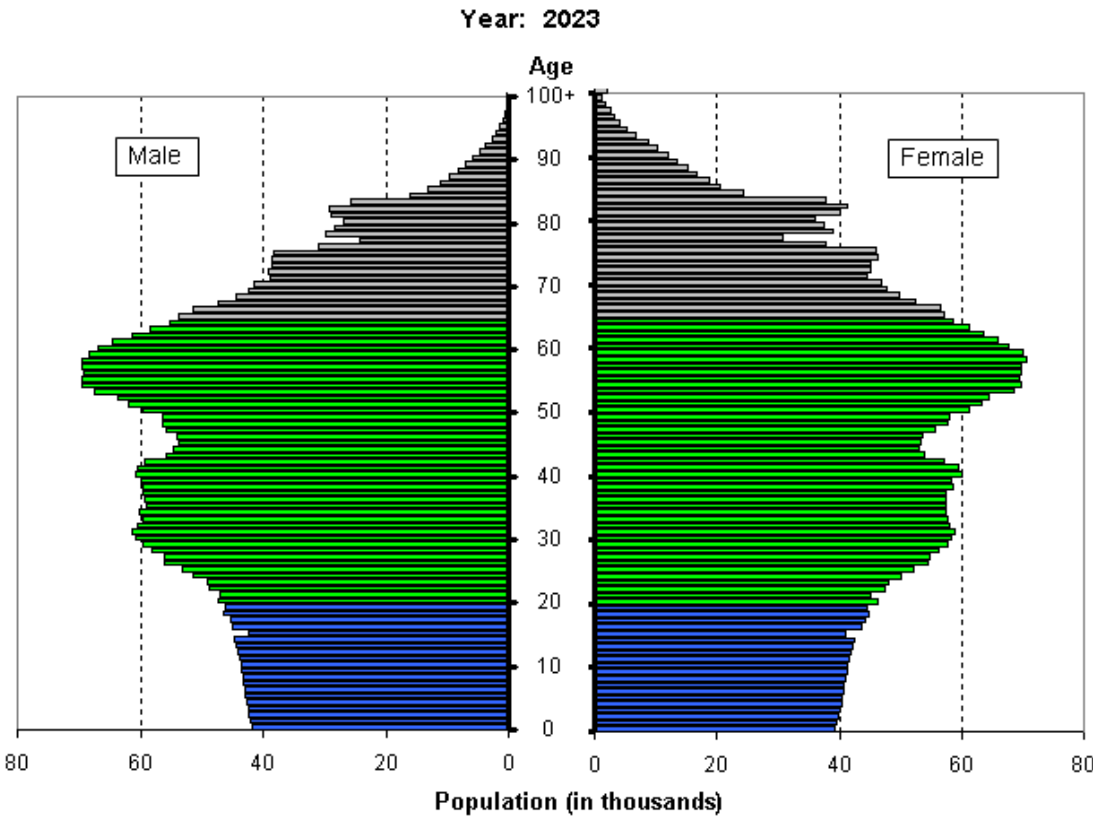
# Population Structure Austria, 2008



Source: Eurostat

# Population Structure Austria, 2023

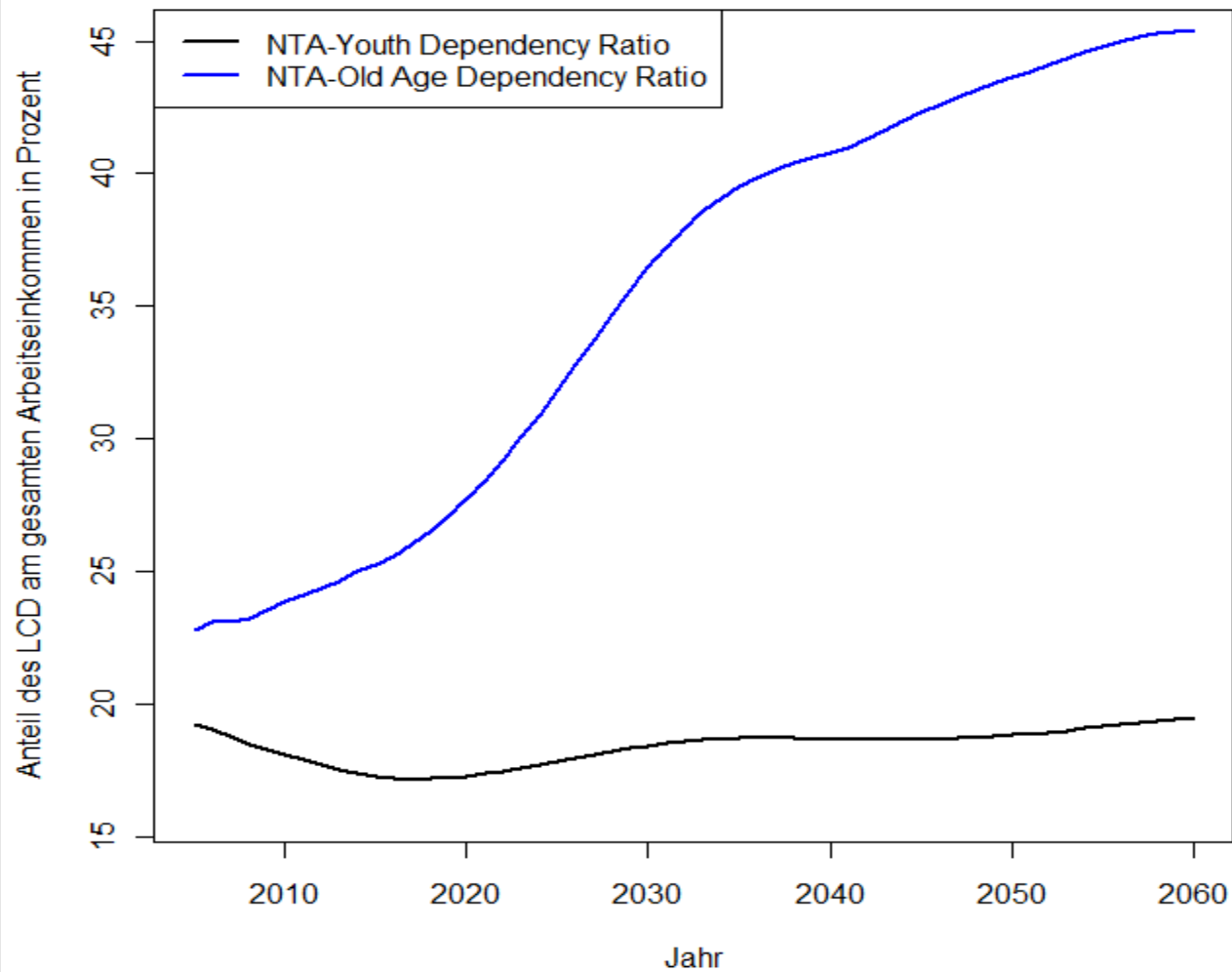
(the year of the lowest value of the first demographic dividend)



	Number	Share
P65+	1,792	20.3
P20-64	5,316	60.3
P0-19	1,703	19.3
Total	8,811	100.0

Source: Eurostat

## NTA - Abhängigkeitsquotienten



Source: Hammer and Prskawetz (2011)